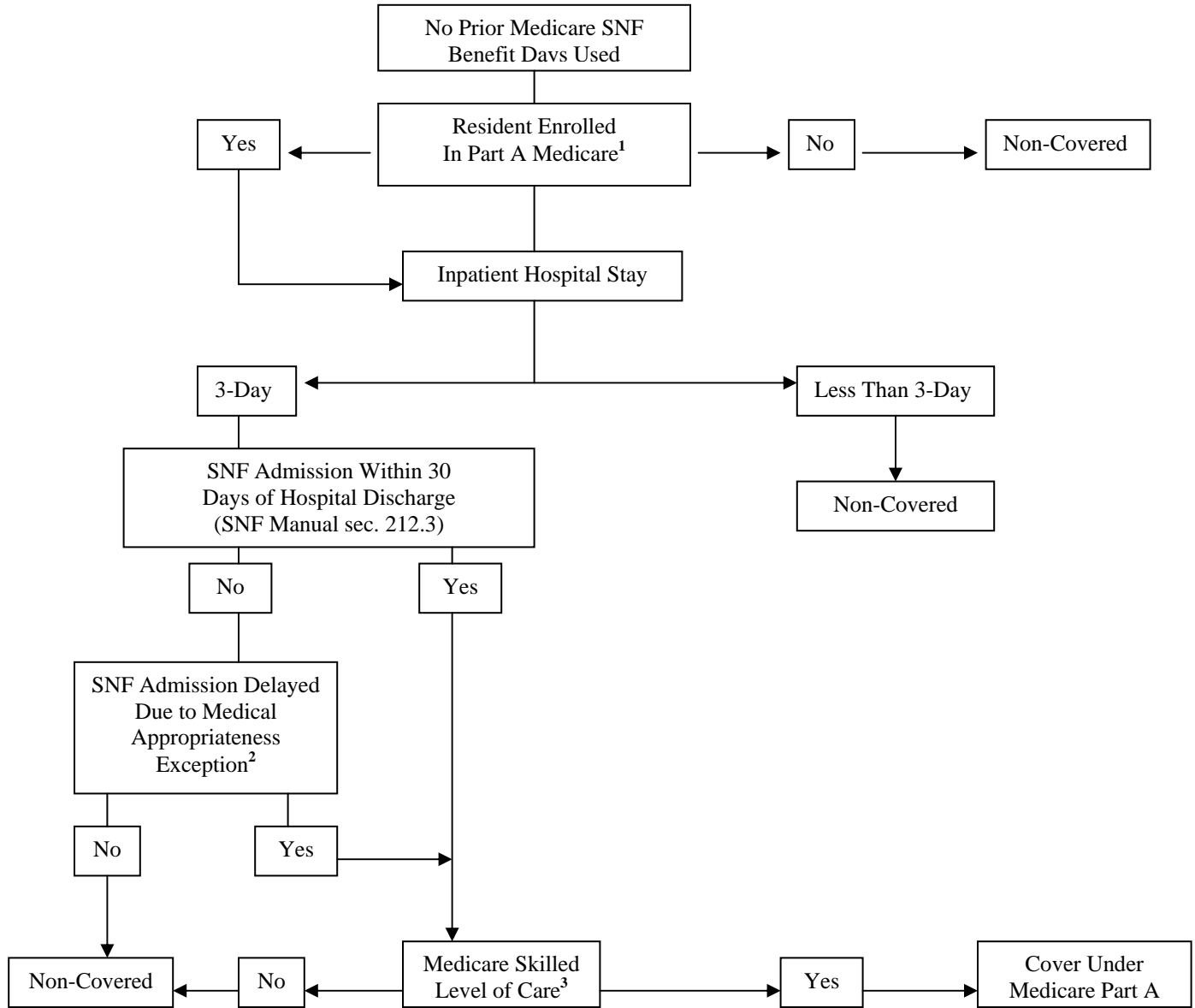


MEDICARE BENEFIT PERIOD DECISION TREE



1. Check Common Working File (CWF) for information on benefit days, HIC# and name, hospice election periods.
2. Requires very specific documentation from the physician in order to be eligible after 30-day window. Medical needs must be predictable. (SNF Manual Sec. 212.3 (B)(1))
3. See SNF Manual sections 214 (general requirements, nursing) and 230.3 (skilled therapy)

MEDICARE BENEFIT PERIOD DECISION TREE

Benefit Period: See SNF Manual Sec. 240; 42 CFR 409.60

